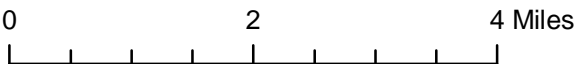
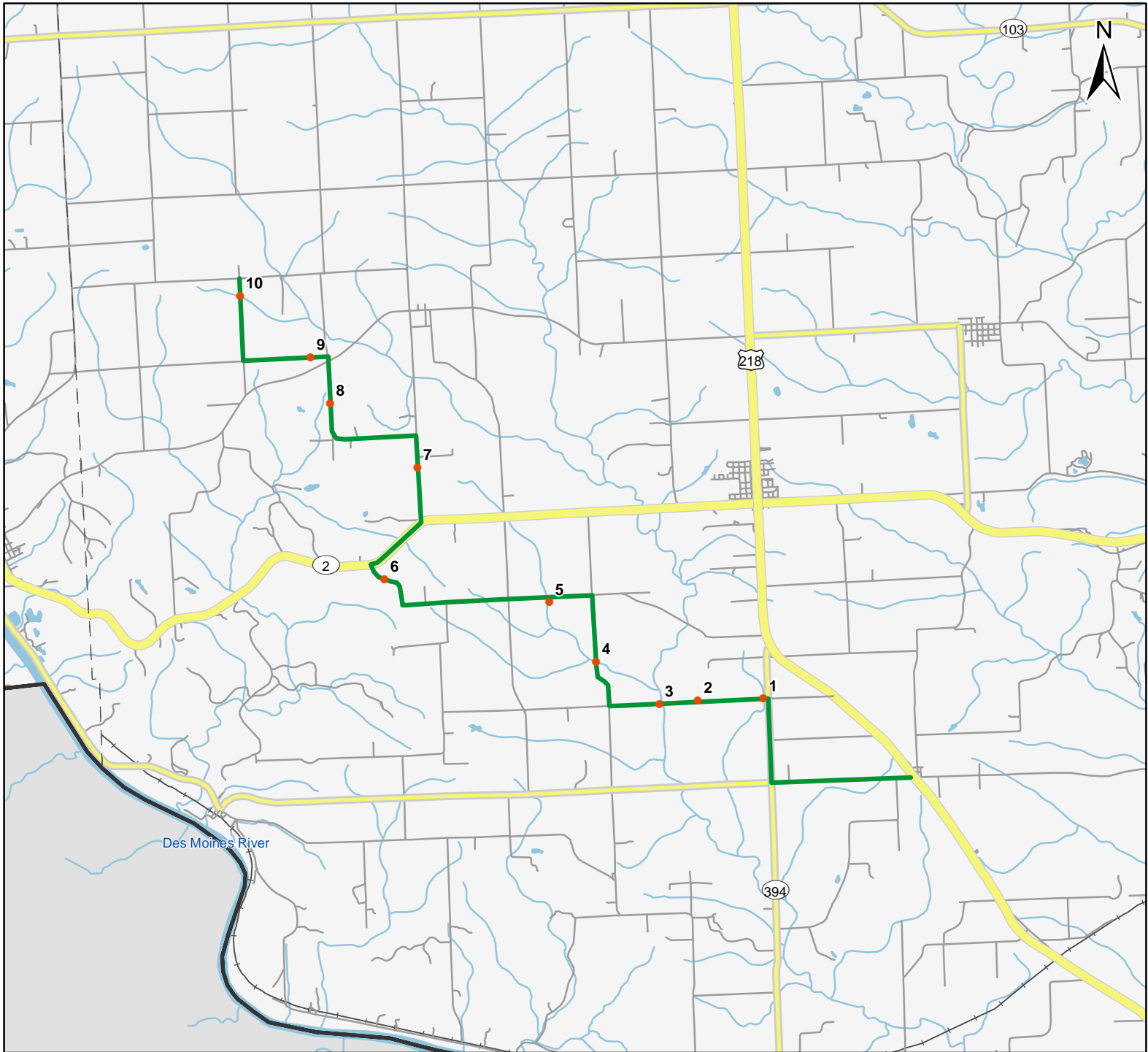


North American Amphibian Monitoring Program



Route: 360125 Charleston, IA



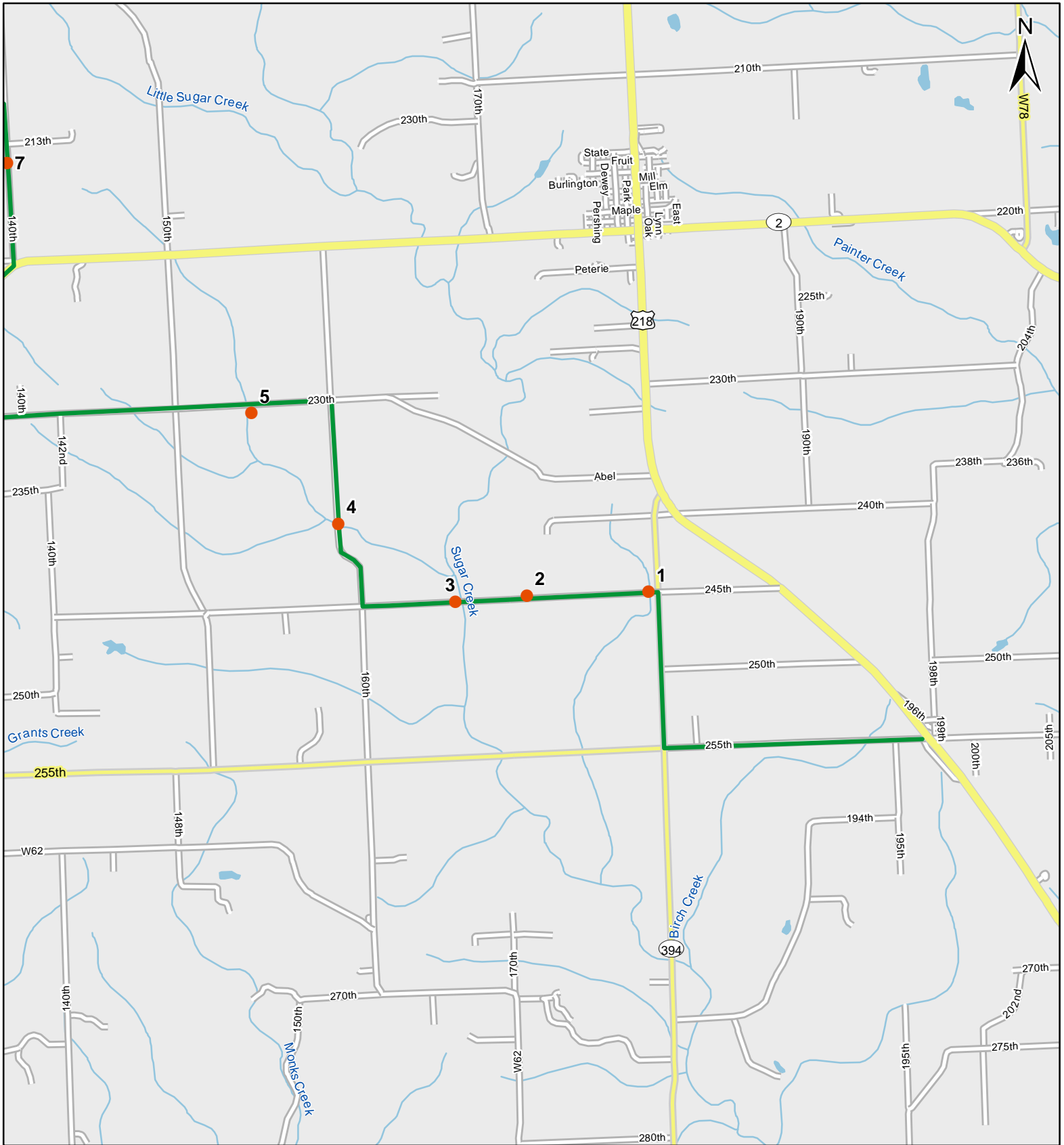
Legend

- Stop Locations
- Route Path





For more information, please visit the NAAMP website:
<http://www.pwrc.usgs.gov/naamp/>

Route: 360125 Charleston, IA

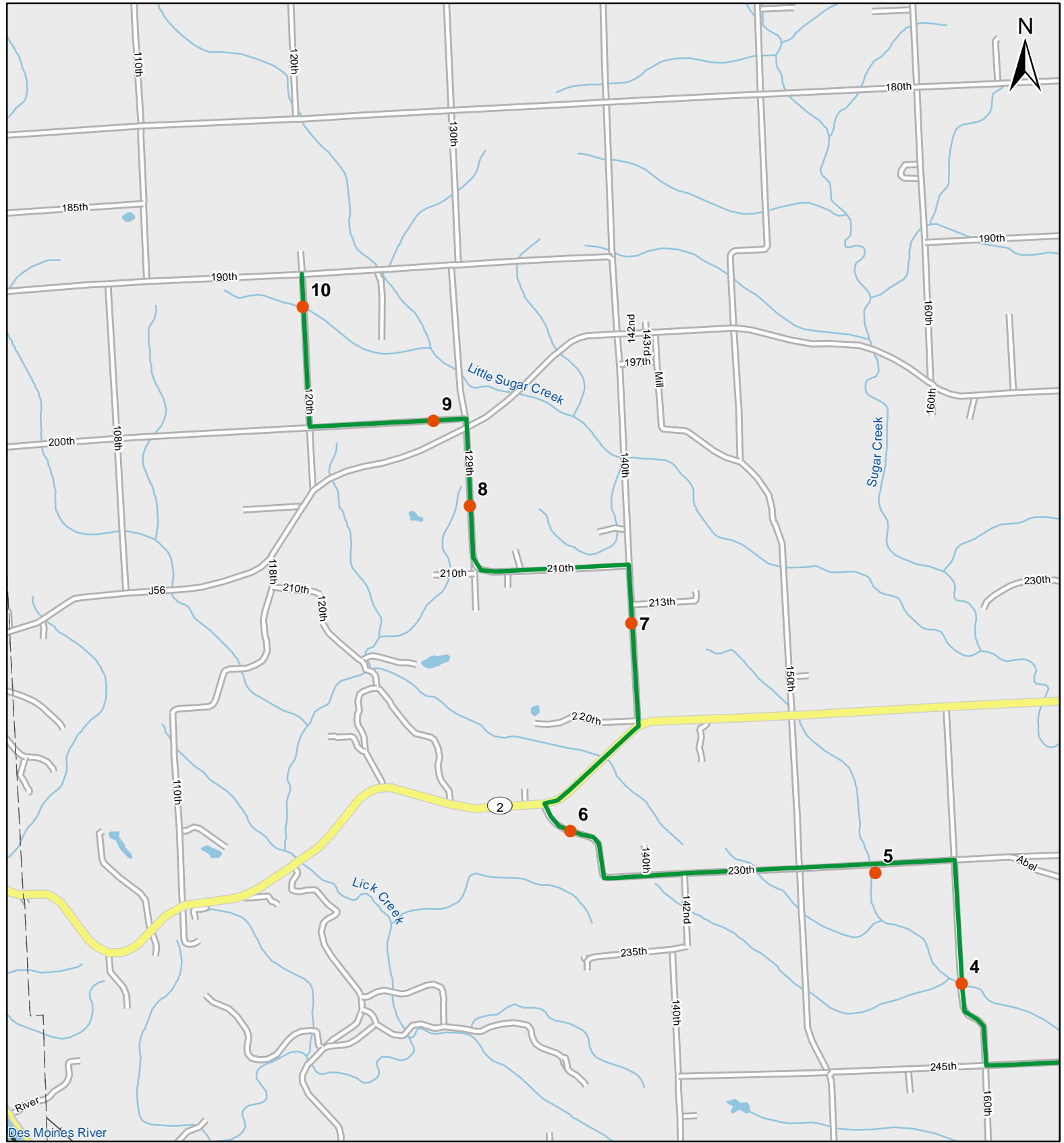


1:50,000

Legend

-  Stop Locations
-  Route Path

Route: 360125 Charleston, IA



0 1 Miles

1:50,000

Legend

- Stop Locations
- Route Path



Frog and Toad Call Survey Route Description

Route ID **360125**

Established:

Site Number	Name	County	Latitude	Longitude	Directions
1	2.8	Lee	40.6049995	-91.5653992	From start point follow route 2.8 miles to small drainage at intersection of 245th and Hwy 394/180th st
2	3.5	Lee	40.6052017	-91.5803986	Continue on 245th 0.7 miles to small pond on left.
3	4	Lee	40.6049004	-91.5892029	Continue west on 245th 0.5 miles to bridge. Wetland on right, and creek
4	5.2	Lee	40.6128006	-91.6031036	Continue on 245th go right on 160th to a drainage running through a cattle pasture, just north of the S-curve on 160th
5	6.4	Lee	40.6236	-91.6130981	Continue on 245th and turn left onto 230th. Stop at drainage at bottom of the hill. Also small pond on left, up the hill.
6	8.8	Lee	40.6288986	-91.6503983	Continue on 230th 2.2 miles to large pond on left by house # 1356
7	10.4	Lee	40.6481018	-91.6416016	Continue on route. Stop at pond on left 0.6 miles north of Hwy 2/140th junction.
8	12.2	Lee	40.6599007	-91.6607971	Curve on route. Stop at drainage just north of the merger with 129th st. At bottom of cattle pasture, just before a white house.
9	12.9	Lee	40.6680984	-91.6647034	Continue north on 129th. Cross primrose road and go left on 200th. Stop at pond on left just after intersection.
10	14.5	Lee	40.6794014	-91.6801987	Stay heading east on 200th and turn right on 120th. Stop at last wooded low spot just before 120th T's with 190th.